

Professional Audio Visual Innovations

www.cleverlittlebox.com



Interactive Projectors



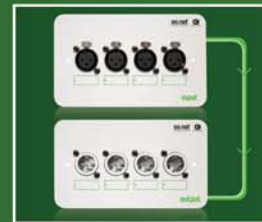
Digital Signage



'Glasses-free' 3D



Amplifiers



Audio-over-Cat5



Audio Problem Solvers



Cables & Faceplates

◦ PVI2600 / PVI2600ST: Pro-Vue Interactive Projectors

Our new **Pro-Vue Interactive projectors** provide a whole new dimension to interactive teaching and presentation; all the benefits of an interactive whiteboard... without the whiteboard!

The Pro-Vue features integrated infrared technology which means that virtually **any** surface can be used as an interactive screen! From a conventional dry-wipe whiteboard, to retractable tripod screens - or simply walls, ceilings or even floors! - any surface can be used as a fully interactive screen. In addition, the size of your interactive 'screen' is only limited to the space available (*imagine how big the screen could be using a simple, clear wall in the school hall?*).

... And your interactive projector is fully portable. Easily stored/transported in a lightweight canvas bag, Pro-Vue Interactive can be taken anywhere your interactive presentation needs to go; whether it be room-to-room, city-to-city or even international travel (*try transporting conventional interactive whiteboard setup on your next flight!*)

Models:

- **PVI2600:** ProVue Interactive Projector
- **PVI2600ST:** ProVue Interactive Short Throw Projector

Features:

- Available as Standard and Short Throw versions
- High brightness: 2600 ANSI Lumens
- Supplied with both E-Pen & extendable E-Wand tools
- Easy installation & maintenance even when ceiling mounted:
 - Built-in auto detector sensor
 - Side change filter
 - Side change lamp
- Integrated security features:
 - Electric pin lock
 - Metal anchor lock
- Image freeze
- 4 x digital zoom
- 7 display modes
- 8W audio speaker
- Quiet (33dB at ECO-mode)
- Multi-language on-screen display
- RJ45 LAN remote control (optional)
- User definable start-up screen (logo capture)
- Low power consumption
- 6 auto functions: search, sync, ceiling, keystone, filter & lamp alert
- Superb quality images



- See a demonstration of Pro-Vue Interactive set-up and working in less than 3 minutes!

Go on-line to www.cie-group.com/provue

completely portable interactivity! -
no whiteboard required!



Specifications:

Optical:	
Projection System	3LCD technology
Brightness	2600 lumens
Contrast Ratio	500:1
Resolution	Native: XGA (1024 x 768) Maximum: UXGA (1600 x 1200) Aperture ratio: 4:3 native / 16:9 compatible
Projection Lens	PVI2600: 1.2X zoom lens, f=18.53 ~ 22.18mm F/1.65 ~ F/1.93 PVI2600ST: Detachable Short Throw
Lamp	200W ultra high pressure lamp
Fan Noise	33dB @ ECO
Throw Distance	1.11 ~ 10.57m (approx. 100" at 2.88M)
Throw Ratio	1.41 ~ 1.7

General:	
Speaker	Mono 8W x 1
Power Requirement	100v AC ~ 240v, 50/60Hz
Power Consumption	Max 285W, Standby < 2.6W
Standard Accessories	E-Wand, E-Pen, Remote Control, Canvas Carry Case, Driver CD-Rom, 1.5M USB Cable, User Manual
Dimensions	PVI2600: 325(W) x 97(H) x 260(D)mm PVI2600ST: 325(W) x 97(H) x 310(D)mm
Weight	3.4kg

Interactive Functions:	
Light emitted	Infrared
CMOS Camera	Built into projector
Power Requirement	E-Pen - 2 x AAA Batteries E-Wand - 2 x AA Batteries
E-Wand Extendable Length	62 ~ 92cm



◦ PVI14V: Pro-Vue Interactive Adaptor

The new **Pro-Vue Interactive** product range provides a whole new dimension to interactive teaching and presentation; all the benefits of an interactive whiteboard... **without the whiteboard!!**

This cost-saving 'Adaptor-only' version allows any existing standard projector to be simply and effectively converted to an interactive projector, allowing almost any surface (such as walls, dry-wipe boards, curtains, ceilings or floors!) to be used as a virtual, fully interactive screen!

In addition, the size of your virtual interactive screen is only limited to the space available and positioning of your projector (imagine how big the screen could be using a simple, clear wall in the school assembly hall?).

Features:

- Converts your standard projector to interactive
- No whiteboard required
- Supplied with both E-Pen and extendable E-Wand control tools
- Ceiling mount, USB connection cable and software supplied
- Powered from USB interface connection
- Flexible positioning of unit

Specifications:

PVI14V:	
Interactive Technology	Infrared
Sensor Accuracy	±6 pixels
Throw Ratio	1.4
Screen Size	Up to 120 inch screen diagonal
Included Standard Accessories	E-Pen, extendable E-Wand, USB cable, mounting bracket, Quick Start Guide, Light Pen II Software
Power Consumption	<0.5W (powered from USB interface cable)
Dimensions	110(W) x 20(H) x 80(D)mm
Weight	0.8kg

Interactive Functions:

Light emitted	Infrared
CMOS Camera	Built into adaptor
Power Requirement	Adaptor via USB connection, E-Pen - 2 x AAA, E-Wand - 2 x AA Batteries
E-Wand Extendable Length	62 ~ 92cm

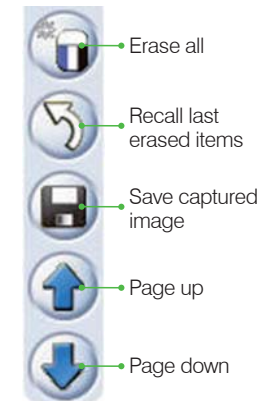
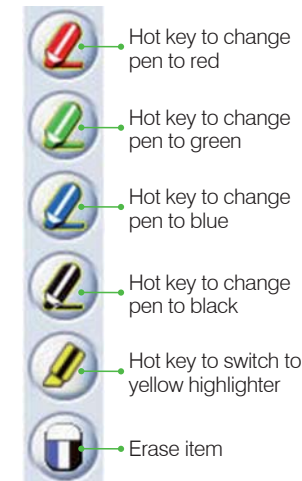
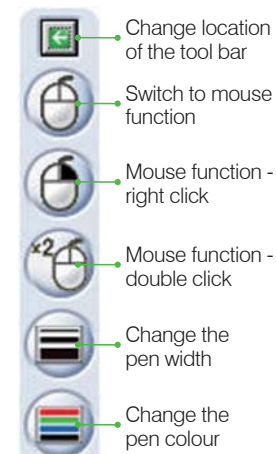
System Requirements:

OS Required	Microsoft, Windows 98/2000/XP/Vista/Macintosh
Processor Type	Intel Pentium or above
RAM Size	128Mb (256Mb or above recommended)
Minimum Hard Drive Space	30Mb CD-Rom Driver & available USB 2.0 port



Adaptor attaches to convert any standard projector to interactive!

Toolbar Functions:



◦ Wi-View 300V: Projector-to-Wireless Converter (incl. Wireless Hub)

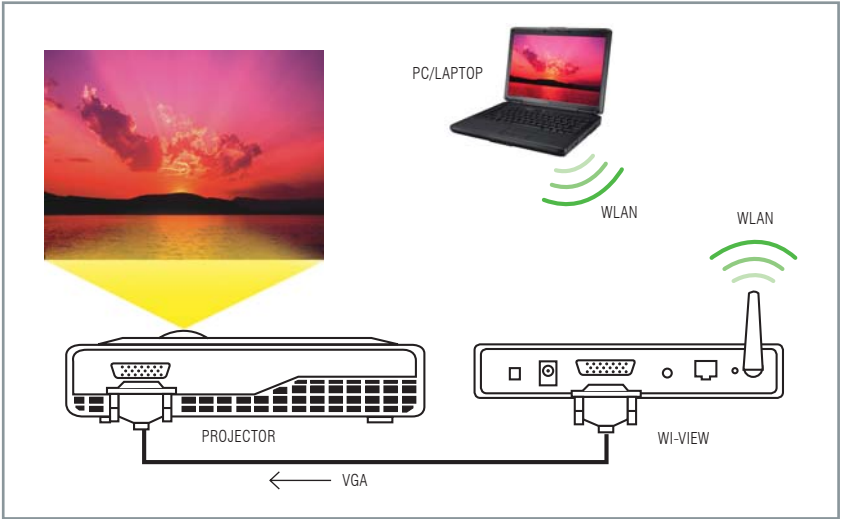
Our new Wi-View 300V VGA Wireless Converter is an easy-installation unit which converts your standard VGA projector (or VGA screen, etc) to a wire-free device, allowing users to easily connect via their PC/laptop's wireless LAN facility.

With plug-and-play of the Wi-View hardware to the projector and simple, secure access software from the PC/laptop; fast, easy and wirefree presentation in the classroom/conference room is immediately available.

Supporting multi-user switching, any member of a conference/class can easily log in to the Wi-View Server, switching their individual computer screen to the projector without moving computers or reconnecting cables.

Features:

- Fast, simple wireless presentation; no more cable swapping or trailing leads!
- Compatible with all projectors and screens featuring a VGA input
- Supports output resolution up to 1280 x 768 with 24 bit colour
- No installation CD required; software is directly downloaded from the Wi-View device
- Web-based user interface for easy configuration
- Conference control function, allowing host/chairperson to control multiple users during meetings
- Also features standard Wireless LAN access point function



Specifications:

Specification	Wi-View 300V:
Wireless Standards	IEEE 802.11g
LAN Standards	IEEE 802.3u
Data Rate	Wireless: up to 54Mbps LAN: 10/100 Mbps with auto MDI/MDIX
Protocol	TCP/IP
IP Configuration	Automatic: DHCP Manual: static IP address
Security	IEEE Standard 64/128 bit WEP
Antenna	Detachable antenna with SMA connector
Transmission Power	2dBi external dipole antenna
Receiving Sensitivity	- 65dBm @ 54Mbps - 80dBm @ 11Mbps at 10-5 BER
Wireless Link Coverage	Up to 300 feet/100m (dependant on environment)
Video Streaming	MPEG1/2/4, HD Video Support
Supported Video Format	MPEG1/MPEG2/MPEG4(DivX, Xvid)/WMV9
Supported PC/NB Resolution Colour Depth	16/32 bit colour depth
Supported PC/NB Resolution	SVGA (800x600), XGA (1024x768), WXGA (1280x768)
Supported Output Resolution	SVGA (800x600), XGA (1024x768), WXGA (1280x768)
Supported Operation System	Windows Vista/XP/2003/2000
Power	5v DC , 2.5A
Interfaces	15-pin VGA, RJ-45, Power switch, Reset button, Stereo phono jack, Audio output
Dimensions	117mm(W) x 140mm(D) x 27mm(H)
Weight	279g

◦ Luminis AiO: All-in-One Digital Signage

Clever Little Box's latest generation **Luminis AiO** is the all-in-one solution for creating and running your own unique on-screen digital channel for enhancing communications and delivering eye-catching information.

Luminis AiO is straight out of the box and ready to use. It supports all Windows media file formats and allows you to create your own on-screen messages or play back web-based content.

Luminis AiO can be operated stand alone or can be networked and controlled remotely. Up to 100 Luminis 'client' players can be connected to your network.

Features:

- Latest generation high efficiency, low power consumption media player
- Fast and easy installation; up and running in minutes
- All-in-one plug-in and play solution
- Stand-alone or fully networked
- Simple and intuitive user interface
- Control locally or via web browser
- Use pre-designed display templates
- Design your own display templates
- Landscape and Portrait display option

Play Back:

- Rich Site Summary (web feed)
- Still and moving images
- Video
- Flash animation
- Tickertape messages
- Powerpoint
- Web pages
- 5.1 audio playback
- Optional live TV feeds



Create, amend and control your own digital signage templates, content and schedules with Luminis AiO...



luminis AiO.
Engaging Digital Signage



- The new compact, high efficiency, low power consumption Luminis AiO media player

Specifications:

Model:	Luminis AiO:
CPU	Intel Core 2 Duo, T3400
Chipset	Intel GM45 + ICH9M
Memory	200pin DDRII So-DIMM, 1Gb
Graphics	Intel GMA X4500MHD, HDMI Port x 1, D-Sub VGA Port x 2
Controller	Max Shared Video Memory is 512Mb
LAN	Intel Gigabit Ethernet 10/100/1000
Audio	Realtek ALC662 HD Audio CODEC on-board, stereo 5.1 CH with HDMI
Storage	SATA 2.5" HDD 160Gb
External I/O	2 x VGA Ports 4 x USB 2.0 Ports 1 x RS232 Port 1 x HDMI Port 2 x Audio connectors 1 x Audio Set Live Out 1 x Audio Set Mic-in 1 x Upgrade for Antenna Port
Power Requirements	Auto-ranging 110 ~ 240v / 4 ~ 2A / 60 ~ 50Hz, with IEC320 power inlet
Dimensions	48(H) x 166(W) x 157(D) mm
Weight	1.22kg

◦ Luminis 3D: Auto-Stereoscopic 3D Digital Signage

Using the same Windows-based digital signage platform as our 2D ‘Luminis AiO’, **Luminis 3D** combines all the functionality and ease of use of ‘standard’ digital signage with state-of-the-art auto-stereoscopic screen technology, to provide what are the most truly ‘outstanding’ signage results you can imagine!!

Luminis 3D can be operated as a stand-alone unit, or can be configured in a network as ‘Server’ or ‘Client’ (same Model configurable). Individual Client units in stand-alone mode can be controlled directly or on the local network via a web interface. Alternatively, if a number of units are networked, they can be controlled and updated over a wide area network.

Featuring fully-controllable templates and schedules, the Luminis 3D signage platform supports a combination of both 3D and 2D media content, supporting video, Flash, RSS, streamed images, web pages, PowerPoint, tickertape, plus much more!

Adopting auto-stereoscopic screen technology provides the only true solution to glasses-free 3D – essential, of course, for public signage where there is no control over the audience (*and certainly no chance to hand-out free spectacles to every passer-by!*).

As digital signage becomes the ‘norm’, the ability to catch an audience’s attention and literally stop them in their tracks is the ultimate goal; Luminis 3D delivers.

Features:

- Outstanding glasses-free 3D system
- Windows platform, supporting all standard Windows media files
- Fast and easy installation; up and running in minutes
- All-in-one, plug-in and play solution
- Simple and intuitive browser-based user interface
- Control and update locally or remotely via web browser
- Pre-designed and self-configured display templates
- ‘Unlimited’ number of media/content channels
- Fully-programmable scheduling
- Configurable user permissions

See page 05 for details of the **Magentic 3D** Range of glasses-free Auto-Stereoscopic 3D LCD Screens.

Luminis 3D Media Player Specification:

Part No:	Luminis 3D
Motherboard	BIOSTAR TA780G M2+
CPU	AMD Socket AM2 Athlon 64x2 4400+ (2.3GHz)
Chipset	AMD 780G
Memory	2048MB Corsair DDR2 800MHz 4 x DDR2 DIMM Memory Slot Max. Supports up to 4GB Memory
Graphics Controller	GeForce 9600GT GPU with DDR3 512MB
LAN	Realtek 8168C/8111C on-chip, supporting 1000/100/10M bps
Audio	ATI 791A. Realtek High Definition Audio
Storage	1 x 120GB 3½" SATA II hard disk drive
External I/O	1 x PS/2 Mouse, 1 x PS/2 Keyboard 1 x Standard VGA Port 4 x USB 2.0 ports 1 x RS232 port 1 x DVI port 3 x Audio connectors 1 x RJ-45 10/100/1Gb Base-T Ethernet LAN connector
Watchdog	1 x Hardware watchdog
Indicators	Power On switch and indicator
System Management	CPU temperature monitoring, system temperature monitoring, and voltage monitoring of Vcore, +3.3V, +5V, +12V, -12V are all available to the application for monitoring and reporting.
Power Requirements	230v AC with IEC320 power inlet.
Environmental Conditions	Operating temperature range +5 °C to +40 °C in free air Shock and vibration compatible with light industrial usage.
Dimensions	360(W) x 45(H) x 240(D) mm
Weight	3.5kg



Supported 2D content:

- Flash
- JPEG/BMP/GIF stills and slideshows
- MPEG/AVI video
- html/web pages
- PowerPoint
- Rich Site Summary (RSS feed)
- Optional live TV feeds
- ...plus 5.1 audio playback

Supported 3D content:

- 3D Studio Max*
 - MAYA*
 - Live-action filmed in 3D*
- (*requires processing to auto-stereoscopic format via 'Mixture' software application)

◦ ENABL3D: Auto-stereoscopic 3D LCD Screens

The new Enabl3D range from Magnetic represents the cutting edge of 'glasses-free' 3D screen technology.

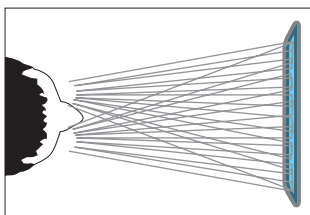
Using the latest generation of auto-stereoscopic (or 'lenticular') LCD technology, Magnetic Enabl3D screens allow incredible resolution and outstanding 3D large format displays without the need for any special glasses, eyewear, headgear or projectors.

Providing the ultimate in eye-catching, crowd-stopping displays, media and digital signage; video images and content appear to fly out of the screen and float in mid air!

The effect truly has to be seen to be believed.

The Magnetic 3D proprietary overlay and industry-leading 3D render software combine to deliver truly stunning visual effects - all without the need for viewers to wear 3D glasses...

How does 3D Auto-stereoscopic screen technology work?..



Also known as 'lenticular', this glasses-free system is regarded as the ideal long-term 3D solution. A sheet of transparent, cylindrical lenses (known as 'lenticules') is fixed to a professional-grade, high definition LCD screen. These lenticules reflect light in specific, duplex acute angles to generate different images to each eye.

Features:

- Glasses-free 3D screen technology
- Auto-stereoscopic, Full-HD 1080p LCD screens
- 9-point multi-viewing 3D zones
- 176° ultra-wide viewing angle
- 50,000 hours viewing time
- Durable and discreet design and build
- IRFM technology helps prevent 'screen burn'
- Configurable Inputs/Outputs
- Active ambient light sensor for energy saving control

Part Numbers / Screen Sizes:

- **22Enable3D:** 22" 3D Stereoscopic Enabled Display Screen
- **26Enable3D:** 26" 3D Stereoscopic Enabled Display Screen
- **32Enable3D:** 32" 3D Stereoscopic Enabled Display Screen
- **42Enable3D:** 42" 3D Stereoscopic Enabled Display Screen
- **42Enable3DOF:** 42" 3D Stereoscopic Enabled Open-frame Display Screen
- **47Enable3D:** 47" 3D Stereoscopic Enabled Display Screen
- **55Enable3D:** 55" 3D Stereoscopic Enabled Display Screen
- **57Enable3D:** 57" 3D Stereoscopic Enabled Display Screen

Specifications:

Model:	22Enabl3D	26Enabl3D	32Enabl3D	42Enabl3DOF	42Enabl3D	47Enabl3D	55Enabl3D	57Enabl3D
Display Diagonal	22"	26"	32"	42"	42"	47"	55"	57"
Optimum Viewing Distance	1.2 - 3 metres	1.8 - 3.7 metres	1.8 - 3.7 metres	2.4 - 6 metres	3 - 6 metres	3.7 - 7.3 metres	4 - 7.8 metres	4.8 - 8.5 metres
Perceived 3D Depth	0.3 metres	0.45 metres	0.5 metres	0.6 metres	0.6 metres	0.7 metres	0.8 metres	0.98 metres
Aspect Ratio	16:9	16:9	16:9	16:9	16:9	16:9	16:9	16:9
Display Resolution (WXGA)	1680 x 1050	1920 x 1200	1366 x 768	1920 x 1080	1920 x 1080	1920 x 1080	1920 x 1079	1920 x 1080
Dimensions (W x H x D)	503 x 418 x 240mm	608 x 440 x 161mm	793 x 483 x 94mm	1018 x 610 x 124mm	1022 x 615 x 124mm	1136 x 686 x 126mm	1265 x 835 x 135mm	1358 x 793 x 154mm
Weight	7.8kg	9kg	14kg	28kg	30kg	40kg	55kg	136kg

MAGNETIC3D
ATTRACT | ENGAGE | AMAZE



'glasses-free' 3D display technology!



◦ **IRX: Infrared Soundfield Classroom Voice Reinforcement System**

The integration of voice reinforcement is recommended by the DfES as a simple and highly effective method of improving the attention and academic results of pupils and students.

Therefore, as part of the Clever Little Box range, we have developed our unique **IRX** Wallmount Integrated Amplifier and Infrared Receiver Unit developed specifically for Soundfield classroom voice reinforcement.

Designed to be completely safe and child-friendly, the 20W IRX features infrared wireless microphone technology, line and mic inputs and level/tone control (user controllable), whilst remaining extremely tamper-proof against 'wandering hands'.

The IRX System also allows for integration of induction loop and personal hearing assistance systems, to further enhance voice coverage for all levels of hearing in the classroom.

Features:

- Unobtrusive but effective voice reinforcement in the classroom
- Improved effectiveness of the teaching environment
- Wallmount solution
- Strong, durable and extremely child-safe amplifier/IR unit
- Integrated 20W amplifier and IR receiver
- Normally supplied with 4 x high quality wallmount loudspeakers
- Easily integrated with other classroom/teaching technologies such as induction loops personal FM hearing assistance systems, interactive whiteboards, DVD, MP3, etc...



For full information on the application and benefits of Soundfield classroom voice reinforcement, go on line to: www.soundfield.uk.com

IRX amplifier/IR receiver:

The IRX's in-built amplifier features two inputs; one is at line level allowing the use of remote Outreach input plates such as the APA/APL, the other input controls the level of the internal infrared microphone receiver. An 18v DC supply is available from the amplifier to drive the Outreach plates. Both inputs have their own level control.

The amplifier also includes low impedance loudspeaker output (minimum impedance 4ohms) and a separate line level output and 18v DC supply for use with optional APA/LLO output plate.

The IRX is fitted with high and low tone controls to allow adjustment of the frequency response of the speakers. Frequencies at which the controls operate have been chosen to allow speech clarity to be optimised to the acoustic environment.

All signal connections to the unit are accessible only when the front cover is removed and are of the removable screw terminal type allowing for quick and easy connection.

Specifications:

Model:	IRX:
Rated Output	20W RMS @ 8Ω
Frequency Response	100Hz ~ 18kHz ±3dB
THD (At 1kHz)	Better than 0.1% at rated output
Tone Controls	Low 1kHz ±12dB, High 10kHz ±12dB
Line Input	500mv, 600Ω balanced
18v Output	18v DC, fused at 100mA
15v Output	15v DC, fused at 500mA
Line Output	750mv, 600Ω balanced
Power Consumption	35W max
Power Input	230v AC 50Hz via IEC socket
Case	Grey & Green painted steel
Dimensions	325(H) x 224(W) x 85(D) mm
Weight	4.5kg



◦ AVID: In-wall Amplifier System

Stylish, but discreet 2 x 12W stereo amplifier for wall or dado conduit mounting. An ideal solution for AV and single-room voice or sound reinforcement applications.

Features:

- Stereo amplifier fitted to UK 2-gang Wallplate
- New higher power 2 x 12W output (RMS)
- 3 x Input Sources; Stereo Phono, 3.5mm Stereo Jack (Jack has priority) and Wired Input Terminal (on rear PCB)
- Line Level Sensitivity Switch
- Control of ON/OFF and volume via illuminated push buttons located on the front panel
- Infrared remote control of ON/OFF, volume, balance and tone facilities (supplied as standard)
- Clear LED level indicator / setting status display
- Screw terminations on the rear of the unit for loudspeakers, power and wired line input
- Separate loudspeaker balance adjustment to allow system set up (control located on rear of unit)
- Includes Plugtop Power Supply
- Also includes Wallmounted Bracket for remote control

Amplifier Specifications:

Model:	Avid:
Output Power	2 x 12W RMS @ 8Ω
Line Inputs	Stereo Phonos (L & R) Stereo 3.5mm Jack (priority) Screw Terminal (Rear PCB in parallel with 3.5mm Jack Input)
Frequency Response	40Hz ~ 20KHz
Input Sensitivity	200mv / 1v
Power Requirements	24v DC, 1.25A
Dimensions	165(W) x 100(H) x 35(D) mm
Weight	0.26kg



Systems also feature:



• IR Remote Control



• Remote Wall Bracket

Available Accessories:



• AVID S BOX
Surfacemount
BackBox



• AVID IL
2xRCA~3.5mm
Stereo Lead (1.5m)

Also available as complete systems:

AVID SYSTEM C

Featuring 2 x 6W, 8Ω ceiling loudspeakers.



AVID SYSTEM W

Featuring 2 x 15W, 8Ω wallmount loudspeakers.



IA235: 2 x 35W Compact Stereo Amplifier

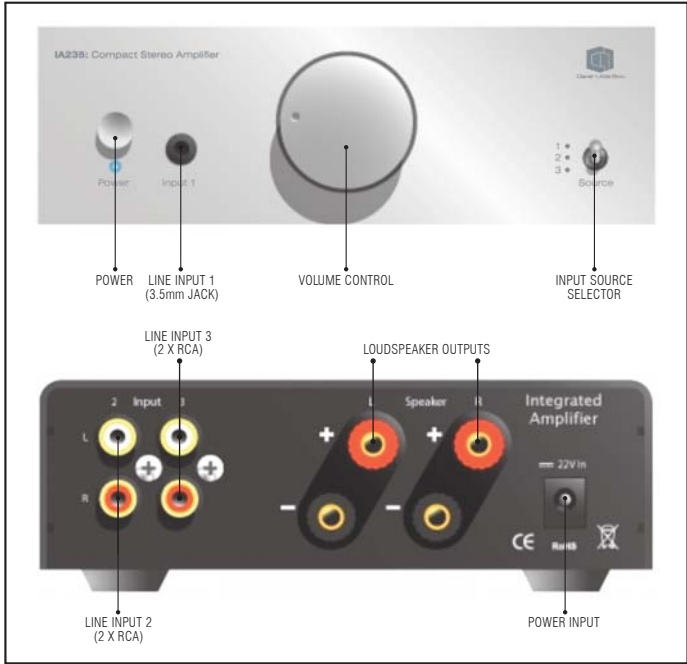
New to the Clever Little Box range, this stylish, ultra-compact 35W stereo amplifier is ideal for AV sound reinforcement applications such as boardrooms, classrooms and training/presentation suites.

Features:

- 2 x 35W Low Z outputs @ 4Ω
- Stylish, ultra-compact housing for stand-alone or AV cabinet/PC tower integration
- 3 x Input sources; Front - 3.5mm stereo jack
Rear - 2 x dual phonos
- Input source selection switch on front facia

Specifications:

Model:	IA235:
Output Power	2 x 35W RMS @ 4Ω
Line Inputs	Stereo 3.5mm jack 2 x Dual Phonos
Frequency Response	20Hz ~ 20kHz
Input Sensitivity	220mV (±20)
Dimensions	140(W) x 48(H) x 160(D) mm



CA 9.2: Compact 12W Stereo Power Amplifier

This compact, lightweight but robust stereo amplifier is an ideal 'component' unit for machines requiring high quality sound reinforcement.

Features:

- Ideal for use in gaming, vending and gambling machines
- Switchable high pass / low pass / full range
- Stereo input via phono sockets
- Optional 230v power supply available
- Supplied with 12v power lead and speaker leads, both terminated with connector blocks



Specifications:

Model:	CA 9.2:
Output Power	2 x 12W RMS @ 4Ω
Signal to Noise Ratio	87dB @ 1KHz
Sensitivity	±3dBu, 550mv
Frequency Range	20Hz ~ 20KHz
Input Impedance (RCA)	1.5kΩ
Crossover Point	150Hz
Power	4A @ 12v DC
Dimensions	48(H) x 80(W) x 112(D) mm
Weight	305g

CA 9.4: Compact 4 Channel 12W Stereo Power Amplifier

This compact and lightweight, but robust 4 channel amplifier is an ideal 'component' unit for machines requiring high quality sound reinforcement.

Features:

- Ideal for use in gaming, vending and gambling machines
- Switchable high pass / low pass / full range
- Stereo input via phono sockets
- 2 x level controls
- Optional 230v power supply available
- Supplied with 12v power lead and speaker leads, both terminated with connector blocks



Specifications:

Model:	CA 9.4:
Output Power	4 x 12W RMS @ 4Ω
Signal to Noise Ratio	87dB @ 1KHz
Sensitivity	±3dBu, 550mv
Frequency Range	20Hz ~ 20KHz
Input Impedance (RCA)	1kΩ
Crossover Point	150Hz
Power	5A @ 12v DC
Dimensions	48(H) x 80(W) x 140(D) mm
Weight	375g

◦ AVB5: Audio-via-Bluetooth Wireless Receiver

The new AVB5 is a low cost, simple, yet effective unit which allows wireless connection between any amplifier (or any device with a line input) and Bluetooth enabled devices, such as:

- MP3 Players
- Mobile Phones
- PC/Laptop Computers
- Microphone/Headsets

Each AVB5 unit has a unique pairing code to identify it, which is especially useful if operating multiple devices within a small area or location, the maximum operational range being 80 metres (dependant on the environmental conditions). A simple blue LED identifies when a connection to the AVB5 is successfully made.

Once paired, the unit streams the audio signal via a secure 2.4GHz A2DP protocol, avoiding any other Bluetooth enabled device within range.

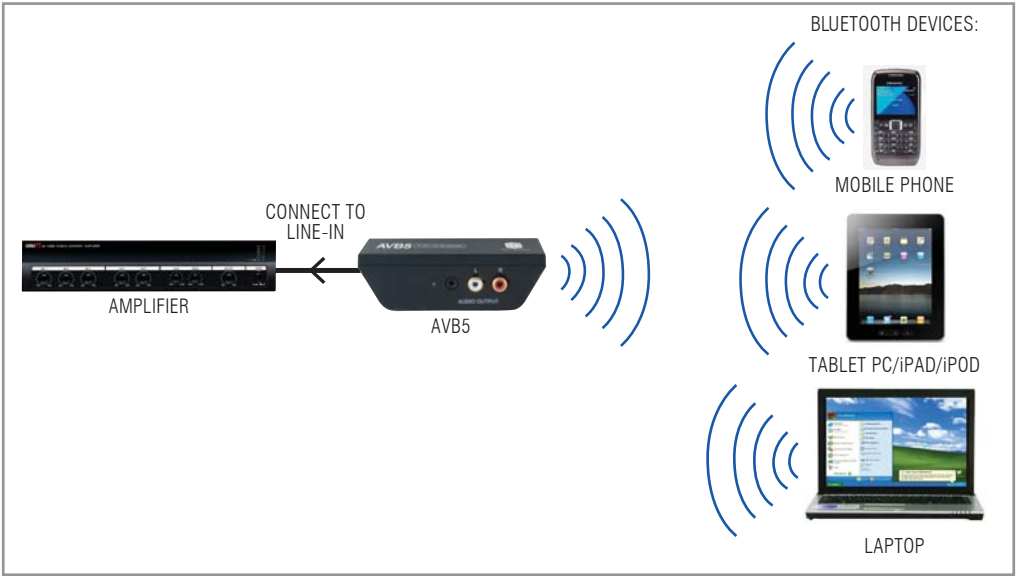
Power is supplied by a 5vDC plugtop PSU (supplied) or via a USB A connection, which may be via a computer or other source with USB facility.

Features:

- Bluetooth Wireless link to amplifiers, pre-amps, hi-fi's, etc
- Unique pairing code to each unit
- Operating range up to 80 metres
- Powered via PSU or USB

Specifications:

Model:	AVB5:
Inputs	2.4GHz A2DP Bluetooth Protocol
Outputs	3.5mm Stereo Jack or 2x Phono Connectors
Pairing/ID	ID code located on the bottom of the unit
Range	80 metres max. (optimum conditions)
Power	5vDC via supplied PSU or via USB A connector
Dimensions	32(H) x 105(W) x 56(D) mm
Weight	0.08kg (not incl PSU)

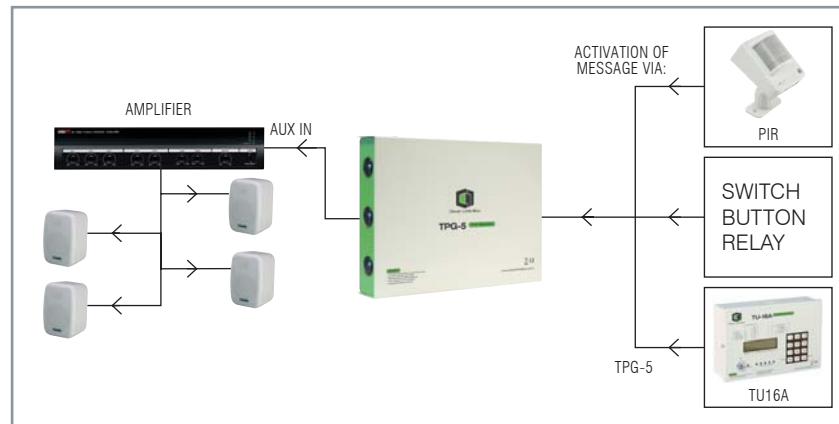


◦ TPG-5: Tone/Pulse Generator

The **TPG-5** device holds 5 factory-set/embedded alarms and tones which can be used in schools, factories and retail sectors for class change, shift start & stop or security signalling purposes.

Activation of the tones is via voltage-free NO or NC contacts, buttons, switches, PIR devices, or via the TU-16A Timer Unit. A pulsed activation will allow just one loop of the required tone; however, if the activation contact remains, the tone will play continually until disengaged.

A line level audio output signal is provided for interface to the amplifier.



Specifications:

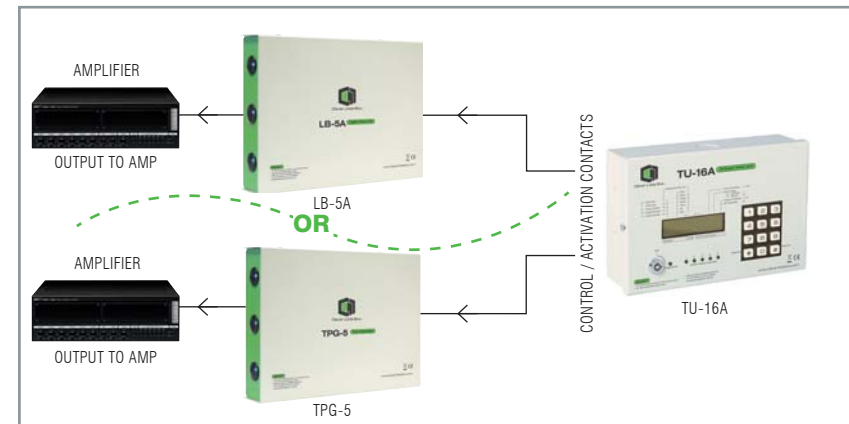
Model:	TPG-5:
Audio Output	0.7v RMS over the frequency range
Output Configuration	Unbalanced
Audio Frequency Range	500Hz ~ 1KHz
Activation	Voltage-free contact closure
S.P.C.O. Rating	1A @ 24v DC, 0.5A @ 125v AC
Connections	Screw terminals on PCB
Power Consumption	3VA @ 240v AC, 50mA @ 24v DC
Dimensions	162(H) x 220(W) x 44(D) mm
Weight	1.8kg

• CIE-Group reserves the right to alter the above specifications without prior notice

◦ TU-16A: 16 Event Timer Unit

The **TU-16A** is a versatile timer used to provide control of external equipment such as the TPG-5 and LB-5A units for schools, factories and retail sectors to signal class change, shift start & stop or security warning/announcement purposes.

A total of 16 events or activations can be programmed over a 24 hour time frame and duplicated over a 7 day period. 5 separate outputs allow activation of different sources at the predetermined times, set via a clear LCD interface.



Specifications:

Model:	TU-16A:
Case Material	Powder coated steel
Power	230v AC or 24v DC
Dimensions	160(H) x 220(W) x 40.5(D) mm
Weight	1.8kg

◦ LB-5A: Digital Audio Storage and Replay Unit

This latest generation of Clever Little Box incorporates MP3 technology to store and replay recorded voice messages, music or tones for security/safety, retail, museum/leisure and advertising applications.

Files are stored on an internal USB memory stick with an 8 hour * memory capacity allowing material to be changed or replaced easily.

The 15 channels can be individually accessed or activated by voltage-free NO or NC contacts, buttons, switches, PIR devices, or via the TU-16A Timer. A pulsed activation will allow just one loop of the required recording; however, if the activation contact remains, the recording will play continually until disengaged (Groups 1 & 2 only).

A line level audio output signal is provided for interface to the amplifier.

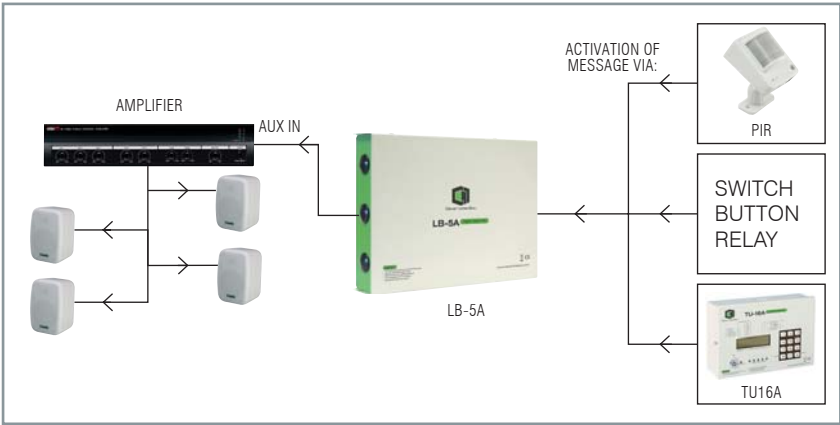
Features:

- MP3 audio storage technology
- Three configurable Groups of 5 Messages, 5 Chimes & 5 Tones
- Additional BGM music facility
- Audio File Group 1 has priority over 2, 3 & BGM; Groups 2 & 3 have priority over BGM
- Audio files stored on internal USB memory stick for fast, easy updates via Windows/Mac
- Sample audio files supplied
- Line level output via stereo phonos or balanced mono screw terminals
- 3.5mm 'monitor' headphone jack socket
- 12v DC powered (supplied with mains adaptor)
- Adjustable interval timer
- Signal 'Looping' or 'One-shot' operation
- Secure, robust & stylish steel case (wall mountable)

Specifications:

Specification:	LB-5A:
Directly Accessible Audio Files	Total 15. Split into three banks of five
Background Music Files	256 (Using 1Gb Memory Stick supplied) Played in random order
Audio File Format	MP3
Audio Outputs	Phono sockets, Screw terminals, 3.5mm stereo jack. Unbalanced stereo / mono, Balanced mono, Headphone monitoring
Power Supply Input	12v DC ±15% @ 300mA. Unit supplied with plug top power supply fitted with 2.1mm DC Power Jack
PIR Supply Output	12v DC ±15% @ 100mA. The supplied PSU will power up to 3 PIRs
Dimensions	162(H) x 220(W) x 44(D) mm
Weight	1kg

* Dependent on memory stick storage capacity

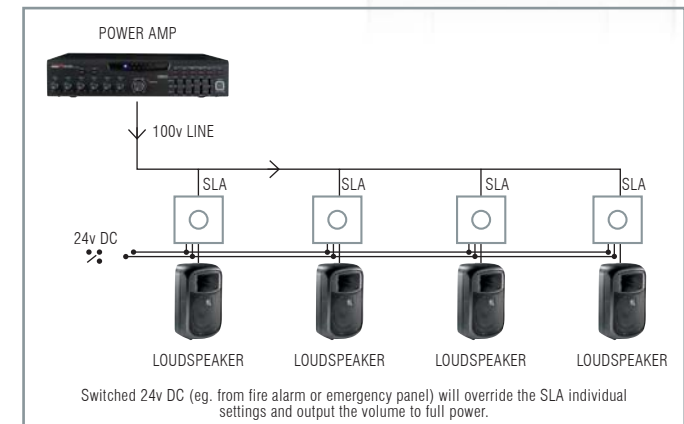
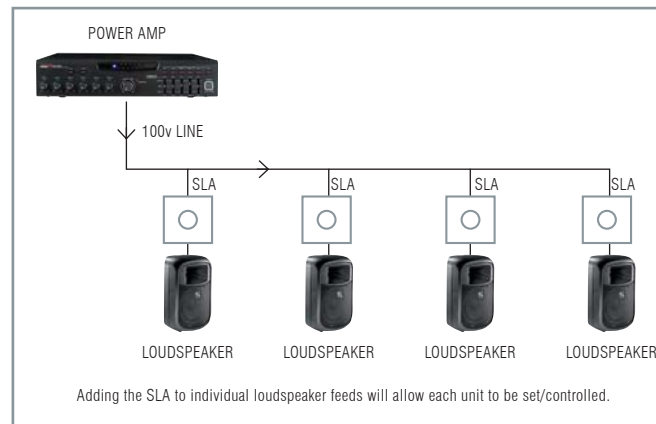
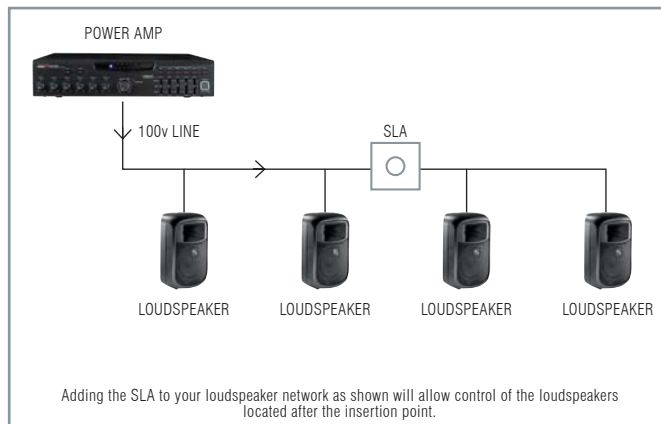


◦ SLA50 & SLA100: 100v Line Attenuators

The SLA range of 100v Line Attenuators (volume controls) offer the ability to control the level of individual loudspeaker lines via an elegant, flush-mounting wall control plate.

Both Models - **SLA50** (50W) and **SLA100** (100W) - feature 10-step plus off-position notched control knobs, connected to high quality audio transformer and fitted to attractive single gang (SLA50) or double gang (SLA100) faceplates with contemporary screwless finish.

As well as volume adjustment, the units incorporate volume restoration facility, which will override the setting of the control knob and output the volume to full, when presented with a 24v DC control voltage.



Specifications:

Model:	SLA50:	SLA100:
Power Rating	50W RMS	100W RMS
Settings/Steps	Off, 1 x 6dB, 9 x 3dB Steps	Off, 1 x 6dB, 9 x 3dB Steps
Paging Override Voltage	24v DC	24v DC
Colour	White	White
Termination	Rear mounted screw terminals	Rear mounted screw terminals
Dimensions	86(H) x 86(W) x 44(D) mm	165(H) x 95(W) x 44(D) mm

◦VCA-1A Voltage Controlled Attenuator

The **VCA-1A** is ideal for both commercial public address amplifiers and professional stereo amplifiers, allowing remote control of the volume levels via a remote 2 core cable link.

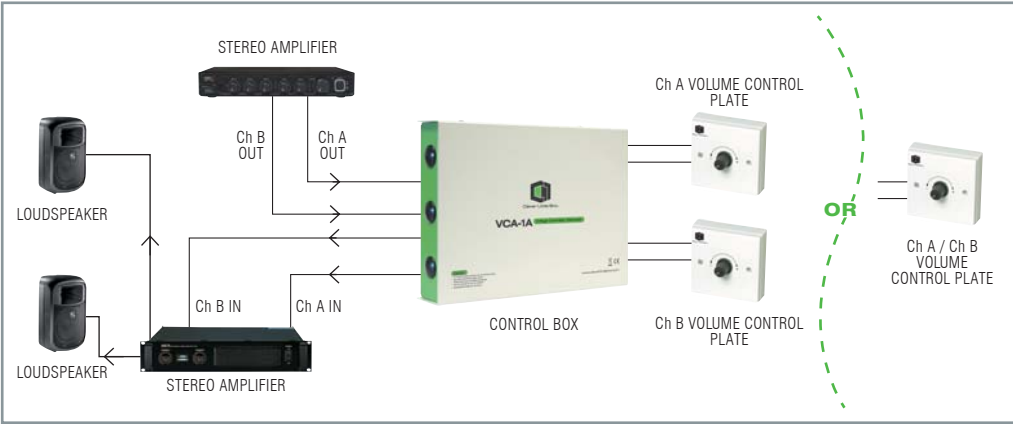
Comprising of a two channel control box and two volume control plates, the main unit is positioned between the amplifier and pre amplifier/mixer increasing or decreasing the signal between the units.

Applications include bars, retail sites, classrooms and industrial sites.

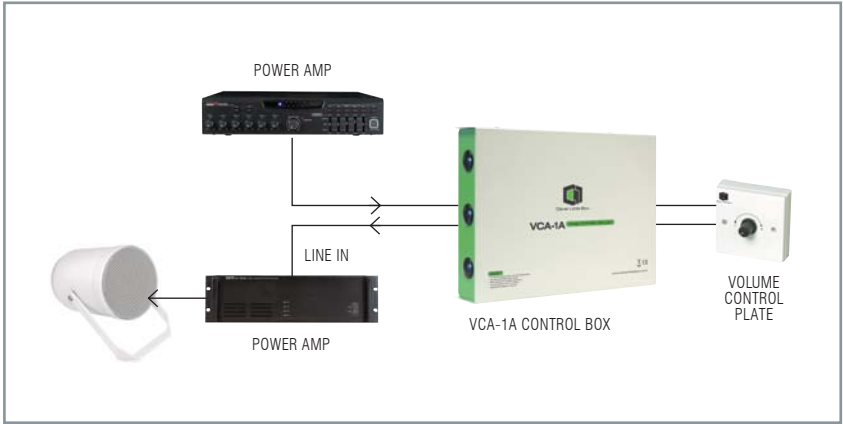
The system can be configured to operate as:

- Mono (1 channel in use)
- Stereo A (2 independent channels in use)
- Stereo B (1 plate controlling both channels simultaneously)

Stereo Operation:



Mono Operation:



Specifications:

Model:	VCA-1A:
Case Material	Powder coated steel
Power	230v AC or 24v DC
Dimensions	162(H) x 220(W) x 44(D) mm
Weight	1.5kg

SONET4: Cat5 Audio Distribution System - 4 in / 4 out

The highly successful 'So.net' Sound-over-Ethernet System has been designed to simplify and speed up installations where multiple microphone or line level inputs need to be situated a distance from the amplifier equipment.

Types of installation include churches, schools, theatres and corporate boardrooms.

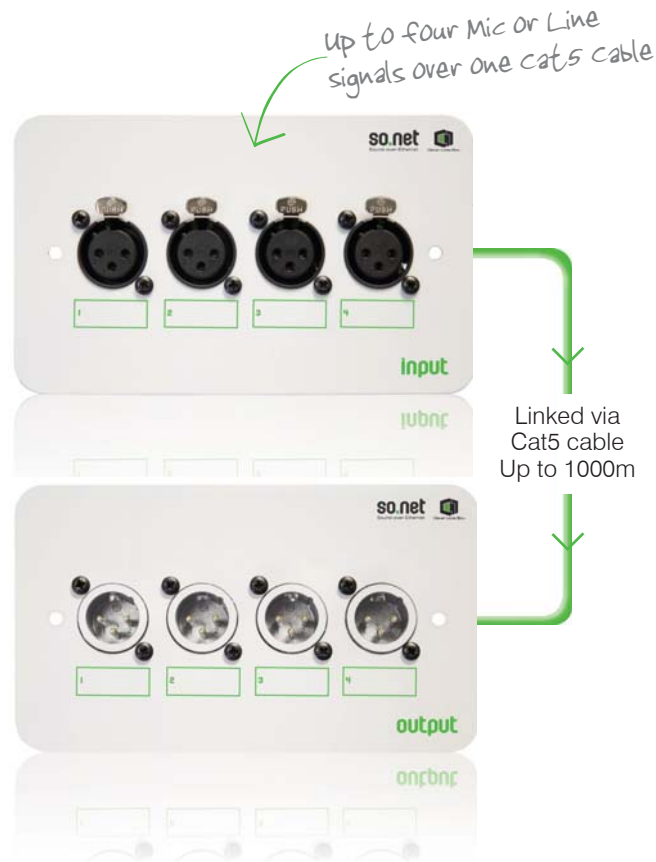
It is an extremely versatile and cost effective installation device which removes the need for multiple cable runs from remote audio inputs to the amplifier equipment. The SONET4 System can transmit up to four microphone or line level signals down one screened Cat5e cable for up to 1000m.

Each input and output can be independently configured for balanced or unbalanced signals as well as line level or microphone level. There is also an option to provide phantom power to the microphone inputs independently.

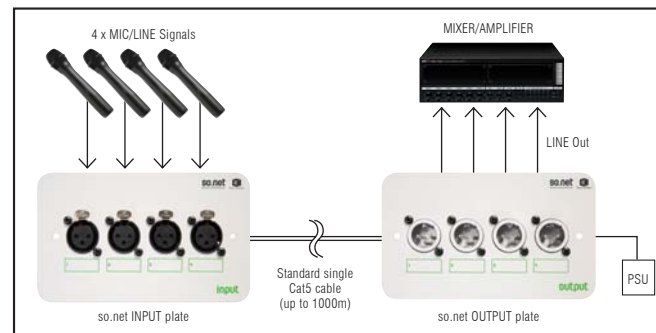
Each unit fits neatly into a standard UK double-gang back box and only requires a power supply at the output or amplifier end (PSU supplied as part of system).

Features:

- Reduces installation time
- Up to 1000m between Input and Output plates
- Very high interference immunity
- Balanced or unbalanced inputs & outputs
- Line or Microphone level inputs & outputs
- Phantom powering (max. 15v DC)
- Four XLR sockets on standard 2 gang plates
- No power required at input module
- Power Supply included as part of system



Suggested System Diagram:



PLEASE NOTE:

When using Cat5 UTP (unshielded) cable, the So.Net system is only capable of transferring up to 3 channels. STP (shielded) Cat5 cable will allow for the maximum 4 channels.

Specifications:

Input Module:

Power	Over Cat5 cable
Ground	Over Cat5 cable screen (or spare pair)
Inputs x 4	Balanced XLR female
MIC/LINE in	Selectable by jumper
Phantom Power	15v jumper selectable
MIC Impedance	600Ω
MIC Level Input	10mV RMS
LINE Impedance	50KΩ
LINE Input Level	700mV RMS (1.5v RMS max)
Cat5 Termination	Screw terminals

Output Module:

Power Requirements	24v DC @ 100mA (regulated linear power supply recommended)
Outputs x 4	Balanced XLR male
MIC/LINE Out	Selectable by jumper
MIC Out Impedance	600Ω
MIC Level Output	20mV RMS (into 600Ω)
LINE Out Impedance	20KΩ
LINE Level Output	700mV RMS (into 20K)

General:

Channels	Four, individually configurable
Bandwidth	100Hz ~ 20KHz (-3dB)
Crosstalk	>60dB
Signal to Noise Ratio	>60dB
Cable Spec	Screened Cat5e cable (UTP can be used, but one pair required for ground, meaning only three channels would be available)
Cable Length	1000m maximum
Cat5 Terminations	Screw terminals

Protected against short circuit on Cat5 cable to ground

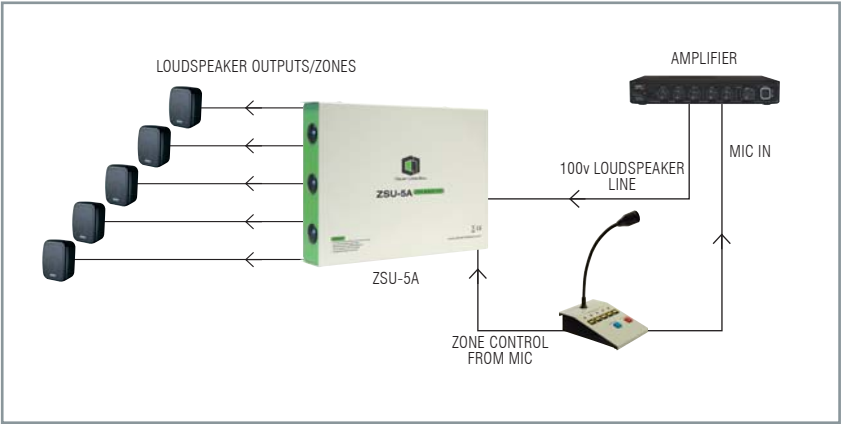
◦ ZSU-5A: Zone Selector Unit

The **ZSU-5A** provides the facility to take a high impedance 100v loudspeaker output from an amplifier and split it into 5 separate zones.

Each zone can be selected using either voltage-free contacts or ideally a multi-zone paging microphone.

As well as zoning capability, the ZSU-5A will also provide a switched 24v DC output and a voltage-free relay contact active whilst the unit is in use.

Ideal for small to medium sized commercial audio installations, units can also be linked to provide and meet larger system requirements.



Specifications:

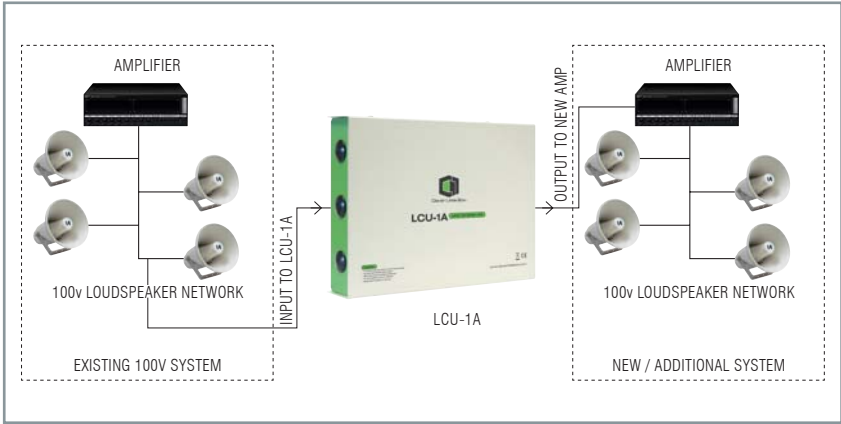
Model:	ZSU-5A:
Case Material	Powder coated steel
Power	230v AC or 24v DC
Dimensions	162(H) x 220(W) x 44(D) mm
Weight	1.8kg

◦ LCU-1A: Line Level Converter

This versatile interface is designed to convert a high impedance 100v loudspeaker signal to either a balanced variable line level or microphone level signal.

Especially useful if extending or adding to existing installations as it negates the need to run new cables from the existing amplifier or main equipment; simply tag onto the 100v loudspeaker circuit and feed the output into a local amplifier.

The unit provides two independent Mic or Line outputs as well as including a DC capacitor to allow connection to VA or monitored systems.



Specifications:

Model:	LCU-1A:
Case Material	Powder coated steel
Power	Passive (no power required)
Dimensions	162(H) x 220(W) x 44(D) mm
Weight	1.2kg

◦ PPS-2: Phantom Power Supply

The **PPS-2** is a mains-operated microphone phantom voltage power supply designed to power electret-type microphones via the signal cable.

It has two independent channels which can be internally configured to provide a balanced 48v, 24v or 12v DC supply to the microphone.

The default setting is 48v, which is the de-facto standard, and is therefore suitable for the majority of electret or condenser type microphones.



Specifications:

Model:	PPS-2:
No of Channels	2
Phantom Voltage	48v, 24v or 12v (selectable)
Input Configuration	Balanced
Input Connectors	2 x Female 3 pin XLR
Output Connectors	2 x Male 3 pin XLR
Insertion Loss	Negligible with <600Ω mics
Power Supply	230v 50Hz (110v option)
Consumption	<3W
Case Material	Metal
Complies With	DIN spec 45596 (P48)
Dimensions	80(H) x 156(W) x 203(D) mm
Weight	1.03kg including mains lead

◦ PAM-10: Barrier Interface

This BT-approved device provides an isolated barrier between amplifiers and telecoms equipment or acts as a coupling device for sending and receiving long distance line level signals.

Traditionally used in applications such as military camps, track-side communications, music-on-hold and telecommunications.



Specifications:

Model:	PAM-10:
Case Material	ABS
Power	Passive (no power required)
Dimensions	60(H) x 120(W) x 40(D) mm
Weight	0.5kg

◦ ELM-1: 100v Line Speaker System Checker

The **ELM-1** is the essential 100v line loudspeaker checking system for the professional PA installer or service engineer, determining the precise amount of speaker loading being presented to 100v line amplifiers on a PA System.

Please note: The ELM-1 is a system checker only and is not designed for accurately checking individual loudspeakers. Optimum operating range is 50W ~ 500W.



Specifications:

Model:	ELM-1:
Case Material	ABS
Power	9v PP3 battery (supplied)
Dimensions	140(H) x 75(W) x 40(D) mm
Weight	0.5kg



Clever Little Box

See all the latest products, specifications,
manuals and installation advice online at:

www.cleverlittlebox.com



T: +44(0)115 9770075 F: +44(0)115 9770081 E: info@cie-group.com W: www.cie-group.com
CIE-Group Widdowson Close Blenheim Industrial Estate Bulwell Nottingham NG6 8WB UK



Clever Little Box

This Brochure is
Fully Recyclable




cie-group
integrated system solutions