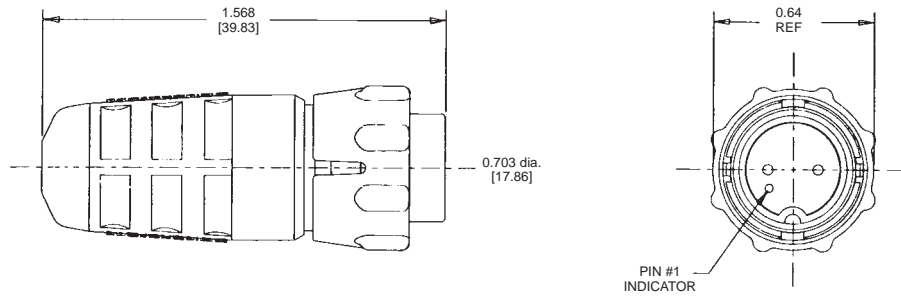
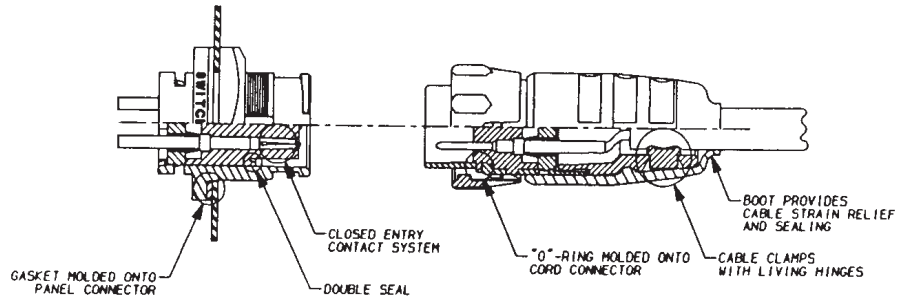
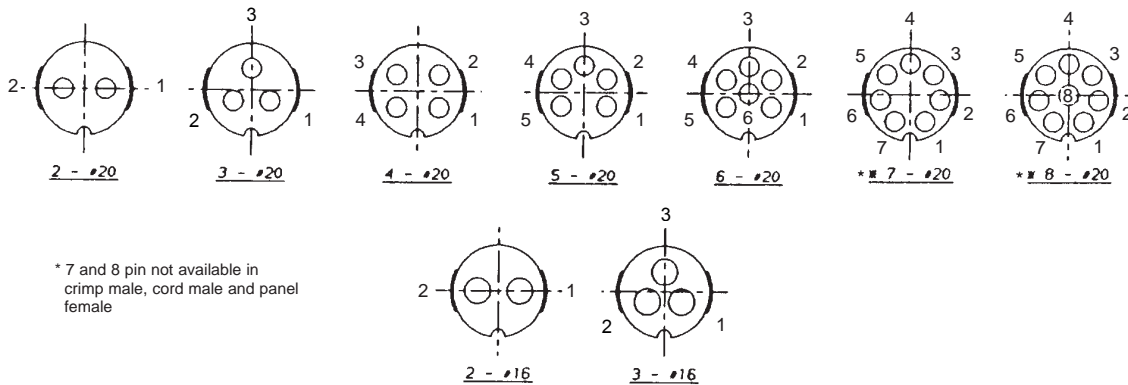


EN3™ MINI WEATHERTIGHT CONNECTOR SERIES

EN3™ CORD CONNECTOR



Cord Connector Contact Arrangements Shown from rear of connector



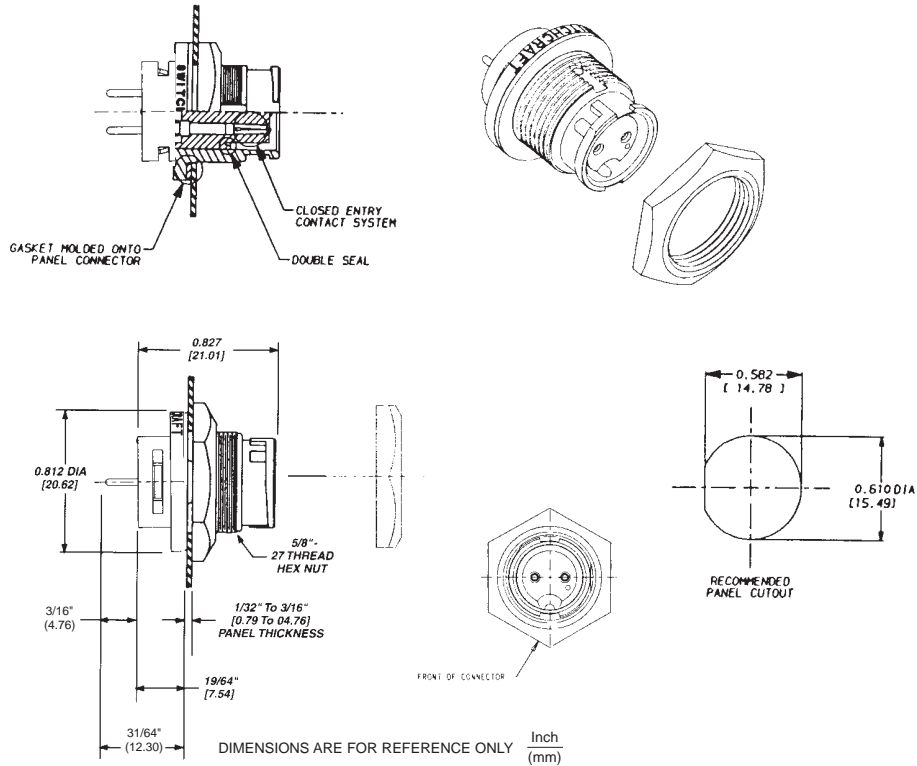
* 7 and 8 pin not available in crimp male, cord male and panel female

DIMENSIONS ARE FOR REFERENCE ONLY $\frac{\text{Inch}}{\text{(mm)}}$

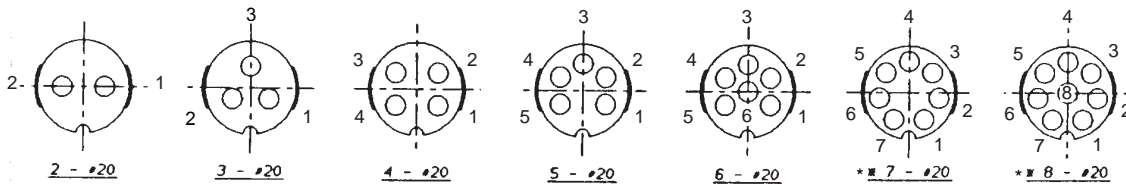
NOTE: Contact your Switchcraft Representative for price and delivery.

EN3™ MINI WEATHERTIGHT CONNECTOR SERIES

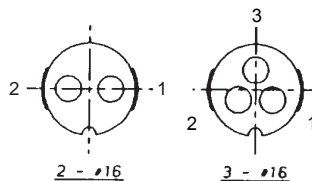
EN3™ PANEL MOUNT CONNECTOR



Panel Connector Contact Arrangements – Shown from front of connector



* 7 and 8 pin not available in panel female



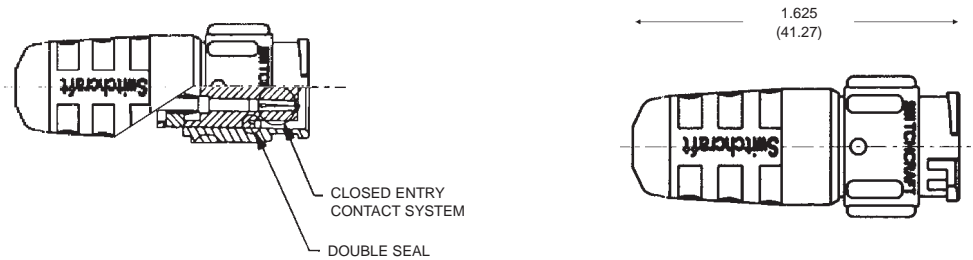
HOLE LAYOUTS VIEWED FROM FRONT OF CONNECTOR
RECOMMENDED HOLE SIZE: #20 CONTACT: .046" DIA.
#16 CONTACT: .055" DIA.

DIMENSIONS ARE FOR REFERENCE ONLY $\frac{\text{Inch}}{\text{(mm)}}$

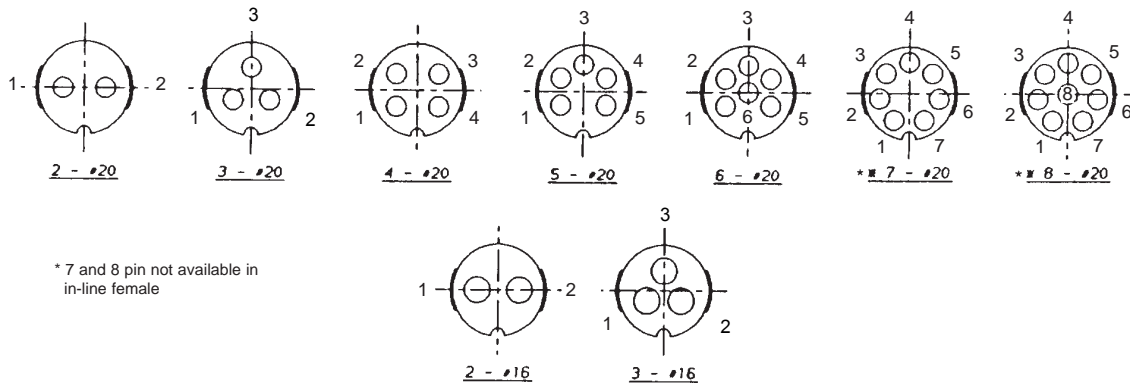
NOTE: Contact your Switchcraft Representative for price and delivery.

EN3™ MINI WEATHERTIGHT CONNECTOR SERIES

EN3™ INLINE CONNECTOR



**In-Line Connector Contact Arrangements
Shown from rear of connector**

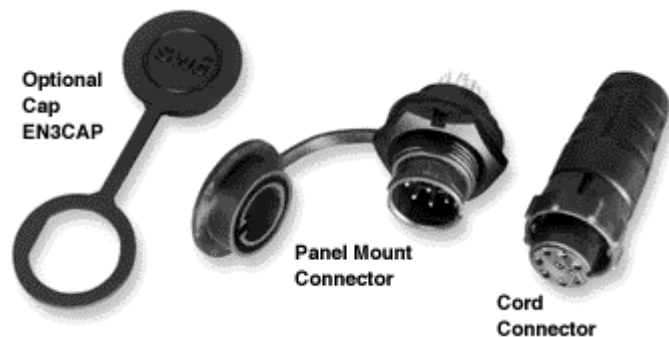


DIMENSIONS ARE FOR REFERENCE ONLY $\frac{\text{Inch}}{\text{(mm)}}$

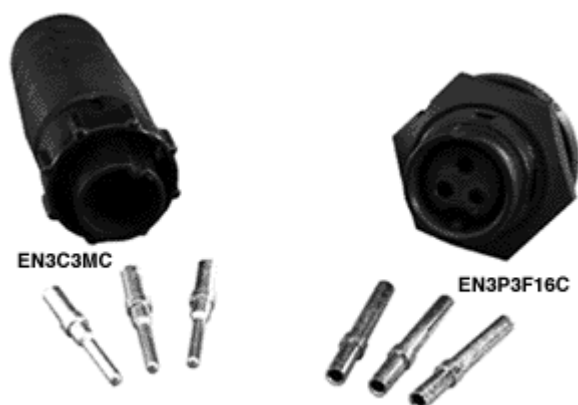
NOTE: Contact your Switchcraft Representative for price and delivery.

EN3™ MINI WEATHERTIGHT CONNECTOR SERIES

EN3™ WITH SOLDER CONTACTS



EN3™ WITH CRIMP CONTACTS



EN3™ WITH PC CONTACTS



EN3™ IN-LINE CONNECTOR



**EN3L7M In-line
Connector**



**EN3C7F
Cord Connector**

EN3™ OVERMOLDED CONNECTOR

